

---

# **Softgram e - Business Solutions Overview**

---

**15 March 2000**

**hyunsu@softgram.com**

## Table Of Contents

### I. For Banking & Finance / Cross Industry

- Web Trading System Solution
- Web Banking Solution
- Web MIS/EIS
- NetFolio

### II. For Business-to-Business Industry

- Internet Purchase Card System Solution
- E-Commerce for Buyers and Sellers
- XML-EDI Engine

### III. For Wireless Internet

- WAP on WEB
- WAP Club Service
- WAP-Based E-Business Application Service

# I. For Banking & Finance / Cross Industry

## 1. Web Trading Solution

A system whereby stock prices and new market information are monitored, ordering and sales are transacted and account balances are confirmed under WEB environments.

### 1.1 Stock Information and Trading System - HTML(CGI/Servlet) base

#### ● Key Features

- Market prices by industry, index information and etc. are defined by script format.
- Development productivity and server module are integrated on the monitor screen.
- Light, Fast, easy to upgrade.

- **Reference** : LG Securities, TongYang Securities, GoodMornig Securities, Hanwha Securities, Korea Economic Daily



### 1.2 Java Realtime Streaming Stock Information and Trading System

#### ● Key Features

- Light Realtime Streaming Server
- Compact Signed Java Applet Client
- Customizable Push Server
- Minimized System Load
- Perfect alternative for Day Traders

- **Reference** : LG Securities, GoodMornig Securities, Hanwha Securities, E\*Trade-Korea



### 1.3 Graph Engine (HTML, Java Applet)

- **Key Features**

- Stock Graph Image Generator
- Java Stock Technical Graph Manager
- Realtime Tick Graph
- Customizable Analysis parameters

- **Reference** : LG Securities, GoodMornig Securities, Hanwha Securities, E\*Trade-Korea



### 1.4 Other Trading Solution

- Document Factory : Background/Scheduled Web Document Generation Engine
- Personalization : My Menu, My Window
- Mobile Phone Service(SMS) : Current Stock, Trade Status Notice
- Stock BBS
- Data Stream Processing Framework (BP)

## 2. Web Banking Solution

Web based customer/corporate banking system solutions.

### 2.1 Java Banking Terminal

- **Key Features**

- Web Java Emulator for tellers
- Application Screen Design Utility, Customizable for Application
- Magnetic Card Reader support
- Passbook printer support
- pure Java solution

- **Reference** : Hyundai Investment Trading and Securities (over 100 branch offices)



### 2.2 Web Banking Application Framework

- **Key Features**

- Public Web Banking System
- IBM SNA Connection support

- **Reference** : Hanvit Bank E-Hanvit Internet Banking



### 2.3 Java PFM(Personal Finance Manager) / Corporate Banking

- **Key Features :**

- Light Signed Java Applet
- Transaction information download, statistics, projection
- Corporate Banking : Payment approval workflow, multiple transfer

- **Reference :** Hanvit Bank E-Hanvit Internet Banking



A screenshot of a Java applet interface displaying a table of transaction information. The table has multiple columns, including transaction ID, amount, date, and status. The data is presented in a standard grid format with a header row and several rows of data.

Transaction ID	Amount	Date	Status	Other Info
20081011	7,000.00	2008-10-11	成功	ATM出金
20081011	81,400.00	2008-10-11	成功	ATM入金
20081011	71,000.00	2008-10-11	成功	ATM入金
20081011	25,000.00	2008-10-11	成功	ATM入金
20081011	2,000.00	2008-10-11	成功	ATM入金
20081011	85,000.00	2008-10-11	成功	ATM入金
20081011	1,000.00	2008-10-11	成功	ATM入金
20081011	82,000.00	2008-10-11	成功	ATM入金
20081011	18,000.00	2008-10-11	成功	ATM入金
20081011	10,000.00	2008-10-11	成功	ATM入金
20081011	1,000.00	2008-10-11	成功	ATM入金
20081011	100.00	2008-10-11	成功	ATM入金
20081011	141,000.00	2008-10-11	成功	ATM入金
20081011	0.00	2008-10-11	成功	ATM入金
20081011	81,000.00	2008-10-11	成功	ATM入金



### 3. WEB MIS/EIS Solution

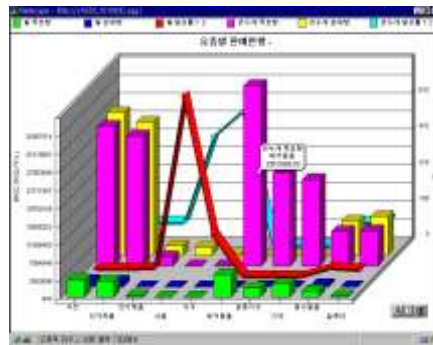
Web based MIS/EIS solution suite.

#### 3.1 Executive Information System (EIS)

- **Key Features :**

- Web based intranet application
- Various reports and business charts
- MS Excel Interface

- **Reference :** LG-Caltex Oil



#### 3.2 Management Information System Functions

- **Key Features :**

- Web based intranet application
- CRM, SCM, Employee Information system, Finance/Accounting, Sales/Order management, ...

- **Reference :** Kookmin Credit Card, Asics Sports, Korea Leasing Company,...



#### 4. NetFolio (Web Application Framework)

Web Application Development Tool.

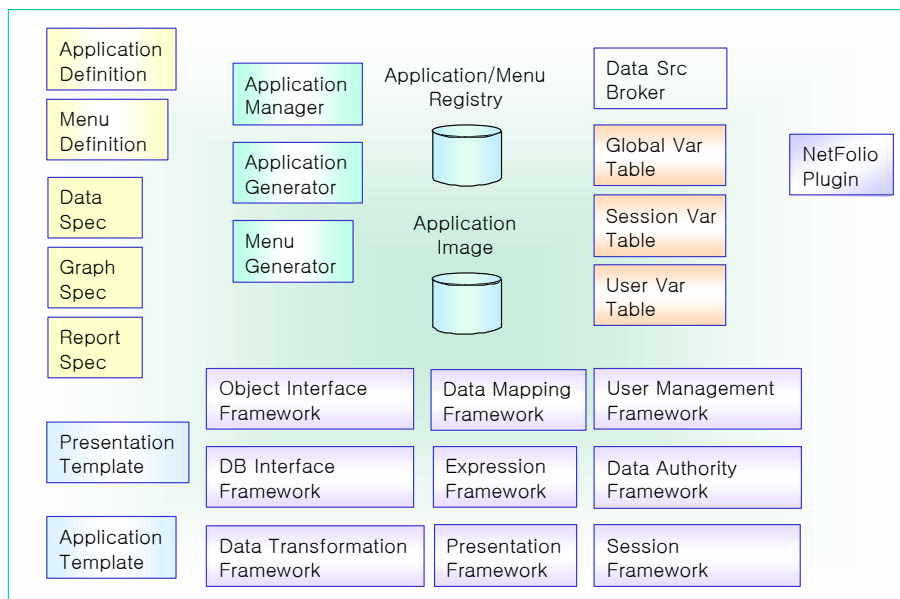
- **Key Features**

- No programming
- Fast DB Interface
- Application Framework/Templating
- User defined business logic support
- JSP(Java Server Page) / Menu Generator
- Various table, Graph, Report support
- MS Excel, Windows Application interface

- **Components**

- NetFolio Script (Servlet, F-CGI support)
- NetFolio Plugin
- NetFolio Data Manager

- **Architecture Diagram**



- **Applications**

- WEB Trading System
- WEB Banking System
- WEB MIS/EIS

## II. For Business-to-Business



## 1. Purchase Card Solution (off-line, internet )

- **Key Features**

- Corporate purchase card system
- Level1,2,3 Data support
- Web Card Terminal (Level 1,2)
- Web Purchase Client (Level 1,2,3)
- e business Corporate Payment Solution
- Card reader + Printer Device support
- Customizable MIS Interface
- XML-EDI Translation

- Reference : Korea Development Bank Capital  
(Under development, scheduled to open on August)



## **2. E-Commerce for Buyers and Sellers**

- Key Features
  - Internet B-to-B mall with corporate payment system
  - Level 1,2,3 Data support via internet
  - Payment via Web Card Terminal
  - XML-EDI Translation
  - low cost per transaction
  
- Status :Under development, scheduled to open on October

## III. For Wireless Internet

### WAP Solution

- **Components**

- WAP on WEB  
(WAP Server/Client/Toolkit)
- WAP Club Service  
(Market presence: Stock Quotes, Game)
- WAP-Based E-Business Application Service  
(Mobile marketing & Transaction Processing Solutions)

- **Strategy**

- Complete/undertake government-funded project
- Market initiatives
- Targeting Corporate Application Solution Service
- Alliance with Mobile Operators
- Apply to existing Softgram Solutions