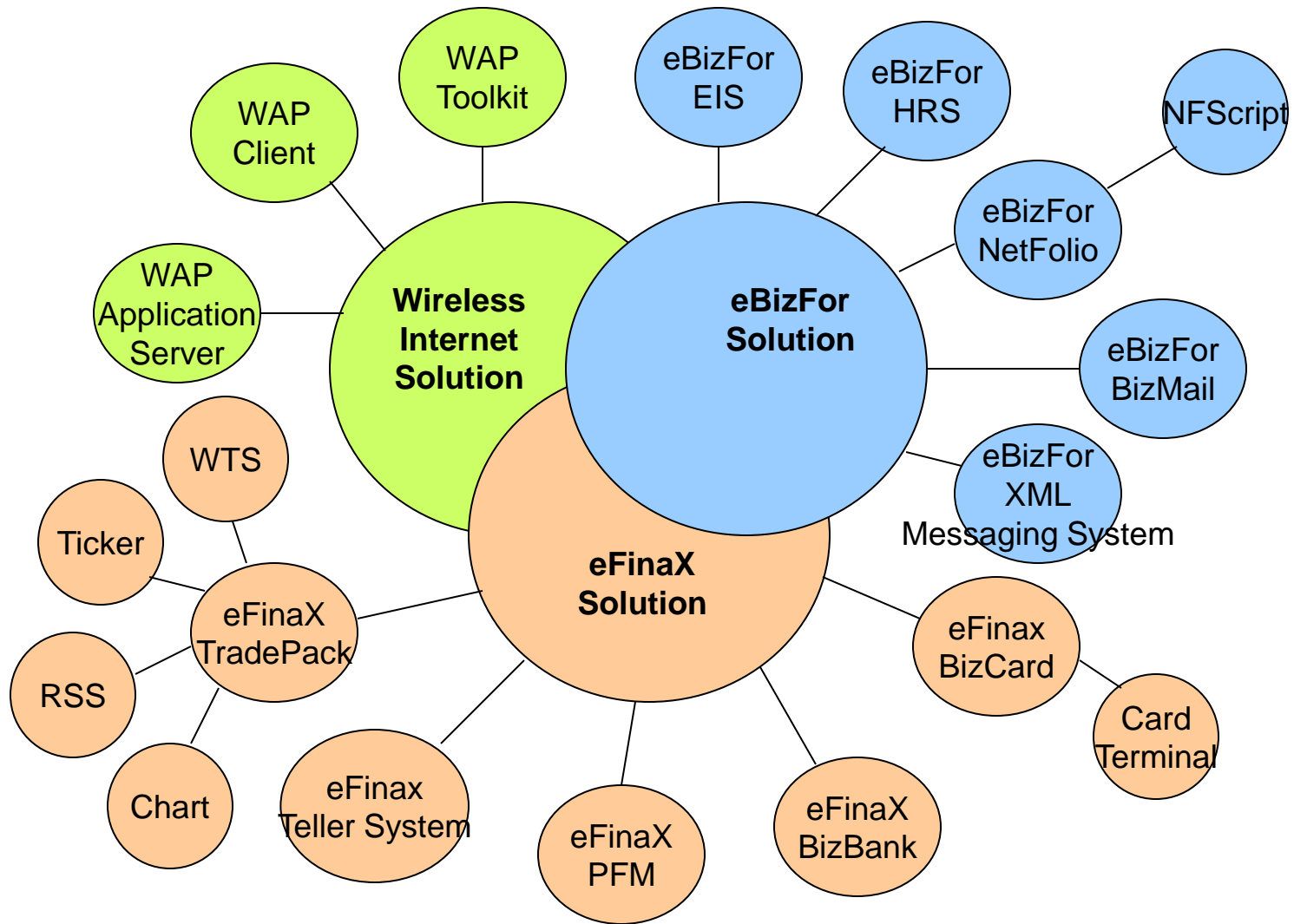




Softgram  
(주)소프트그램  
.....  
솔루션 소개



# Solutions



# eFinaX(e Financial eXecutive) Family

Web Based Solutions for e-business of Finance industry

**eFinaX TradePack**

**Internet Trading Solution**

**eFinaX Teller System**

**Banking Terminal for Tellers**

**eFinaX PFM**

**Personal Finance Management**

**eFinaX BizBank**

**Banking Solution for Corporate users**

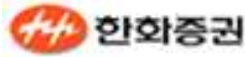
**eFinaX BizCard**

**Corporate Purchase Card Solution**



# eFinaX TradePack-WTS(Web Trading System)

HTML/Servlet/CGI based solution providing stock index, investment information, on-line trading, etc.





# eFinaX TradePack-RSS(Realtime Streaming Service)

Real time streaming stock information and trading system (Java Applet / Windows Application)

RSS for Java : (Signed) Java Applet



LG투자증권

한화증권



EXTRADE KOREA

The screenshot displays a complex stock trading interface. On the left, there's a 'POWER E-TRADE' window showing a portfolio with columns for '종목명' (Stock Name), '현재가' (Current Price), '전일변' (Daily Change), '거래량' (Volume), and '최고가' (High). The main window is a 'goodi 트레이딩' (goodi Trading) window, which includes a '관심종목' (Watchlist) section with columns for '종목코드' (Stock Code), '종목명' (Stock Name), '현재가' (Current Price), '관심비' (Watch Ratio), '거래량' (Volume), '최고가' (High), and '최저가' (Low). Below this is a '주문입력' (Order Entry) section with fields for '주문구분' (Order Type), '수량' (Quantity), and '단가' (Price). The right side of the interface shows a '주요종목' (Key Stocks) table with columns for '종목코드', '종목명', '현재가', '관심비', '거래량', '최고가', '최저가', '거래량', and '가매달' (Daily Change).

RSS for Windows : Real time trading system for Windows (Under development)

# eFinaX TradePack-Chart

Technical analysis chart system for stock, options, and futures (Java Applet/Windows Application)

jChart : Chart system for (signed) Java Applet

gChart : GIF Chart system

Hankyung.com

goodi

E\*TRADE  
K O R E A

한화증권

goodi

E\*TRADE  
K O R E A

한화증권

한화증권

kisinvest.com

LG투자증권

Tong Yang  
Securities Co. Ltd.



wChart : Chart system for Windows (Under development)

# eFinaX Teller System

100% pure Java Client, run time Server and development environment for building the next generation web and Java based branch teller system

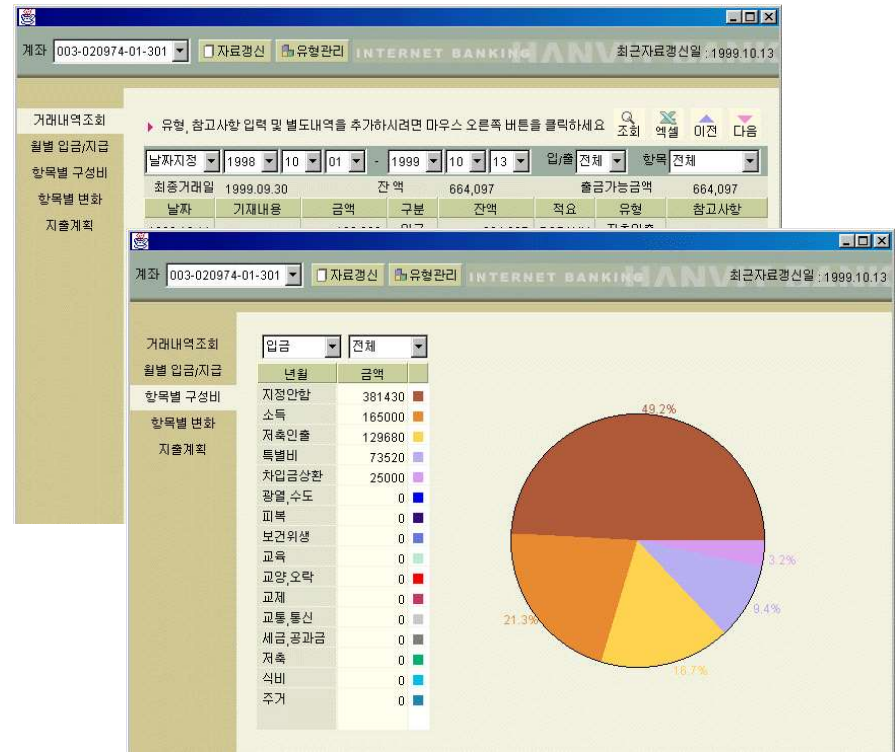
- Easy customization
- Support magnetic card reader
- Support passbook printer
- Developed with Java Swing



# eFinaX PFM (Personal Finance Manager)

Internet personal asset management system for banks and securities companies :  
Customers can manage and analyze their own asset by themselves through internet.

- Easy customization
- Personal asset account management
- Itemize the asset by grouping transactions
- Developed with Java Applet(SSL)
- Visual user interface providing various charts





# eFinaX BizCard

B2B commerce : Web based payment solution for enterprises

- Corporate purchase card system
- Level 1,2,3 data support through internet
- Web card terminal (Level 1,2)
- Web purchase client (Level 1,2,3)
- e-business corporate payment solution
- Card reader, printer device support
- Customizable MIS interface
- XML-EDI translation



(Korea Bank Development Capital)



# eBizFor (e Business For ...) Family

Web based solutions and development tools for corporate e-business

eBizFor NetFolio

Web application development tool

eBizFor BizMail

e-Mail Marketing Solution

eBizFor EIS

Web based executive information system

eBizFor HRS

Web based human resource system

eBizFor XML MS

XML based messaging center solution



# eBizFor NetFolio

Web application framework providing runtime engine and development tools

## Features & Benefits

- No CGI programming needed
- Fast database interface
- Provide Application Framework and Template
- Provide user defined logic
- Auto generate JSP(Java Server Page) / Menu
- Support record processing, table, graph, report printing
- Support interface with MS Excel and other Windows Applications

## Components

- NetFolio Script (Support Servlet and F-CGI)
- NetFolio Plugin
- NetFolio Data Manager

## Applications

- Web Trading System
- Web Banking System
- Credit card inquiry system
- Web MIS/EIS
- Other Web based applications

## e-mail casting solution for DB marketing

### Hana Bank

- DM cost reduction by automating regular e-mail service
- High quality customer relationship management via various mail contents such as birthday and anniversary celebration, new goods information, hobby/life information, etc.
- Customer response analysis system
- Mail acknowledgement, customer satisfaction, survey features
- Easy casting system for mail creation and sending





# eBizFor EIS

Web based information system for corporate personnel, finance, accounting, sales, etc.

Developed with NetFolio

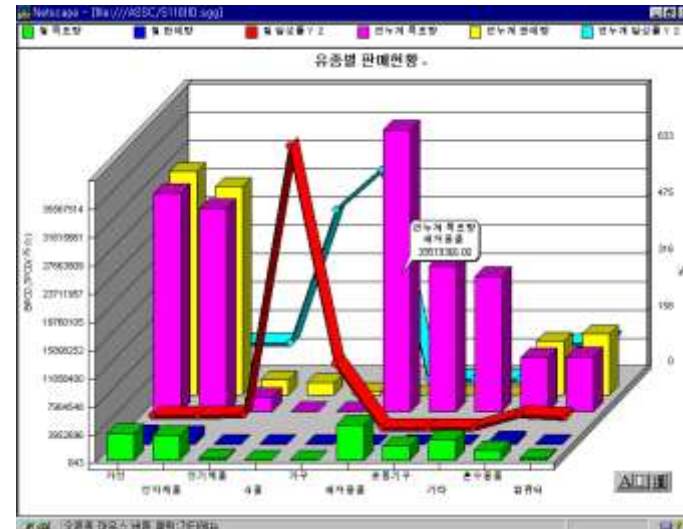
Generate various charts and presentation data

Create business plan via simulation

LG-Caltex Oil Refinery Inc.

The screenshot displays a web browser window with a URL 'http://www.kkdata.com'. The main content is a table with columns labeled A through G. The rows are categorized into '계산' (Calculation), '계구' (Account), and '계자총합' (Total). The table contains numerical data for various financial metrics.

	A	B	C	D	E	F	G
계산	계구 합계	3623221	1386999	39.27	30630909	31458867	102.7
계구	계구 합계	3584974	1262791	39.08	28551566	29310501	102.65
계자총합	계구 합계	266247	104209	39.84	2079563	2148586	103.32
	계구 합계	2423	19168	791.09	38834	1738967	477.94
	계구 합계	21475	38232	182.69	88377	520679	568.15
	계구 합계	5000146	2292	0.04	39519598	71750	0.18
	계구 합계	2105518	1354	0.06	20462053	33974	0.18
	계구 합계	2894628	937	0.03	19057313	37776	0.19
	계구 합계	1379543	525289	38.07	7671583	7971947	100
	계구 합계	334543	104716	31.3	7769571	8652567	111.36



# eBizFor Human Resource System

Web based personnel information system

Developed with NetFolio

Generate various charts and presentation data

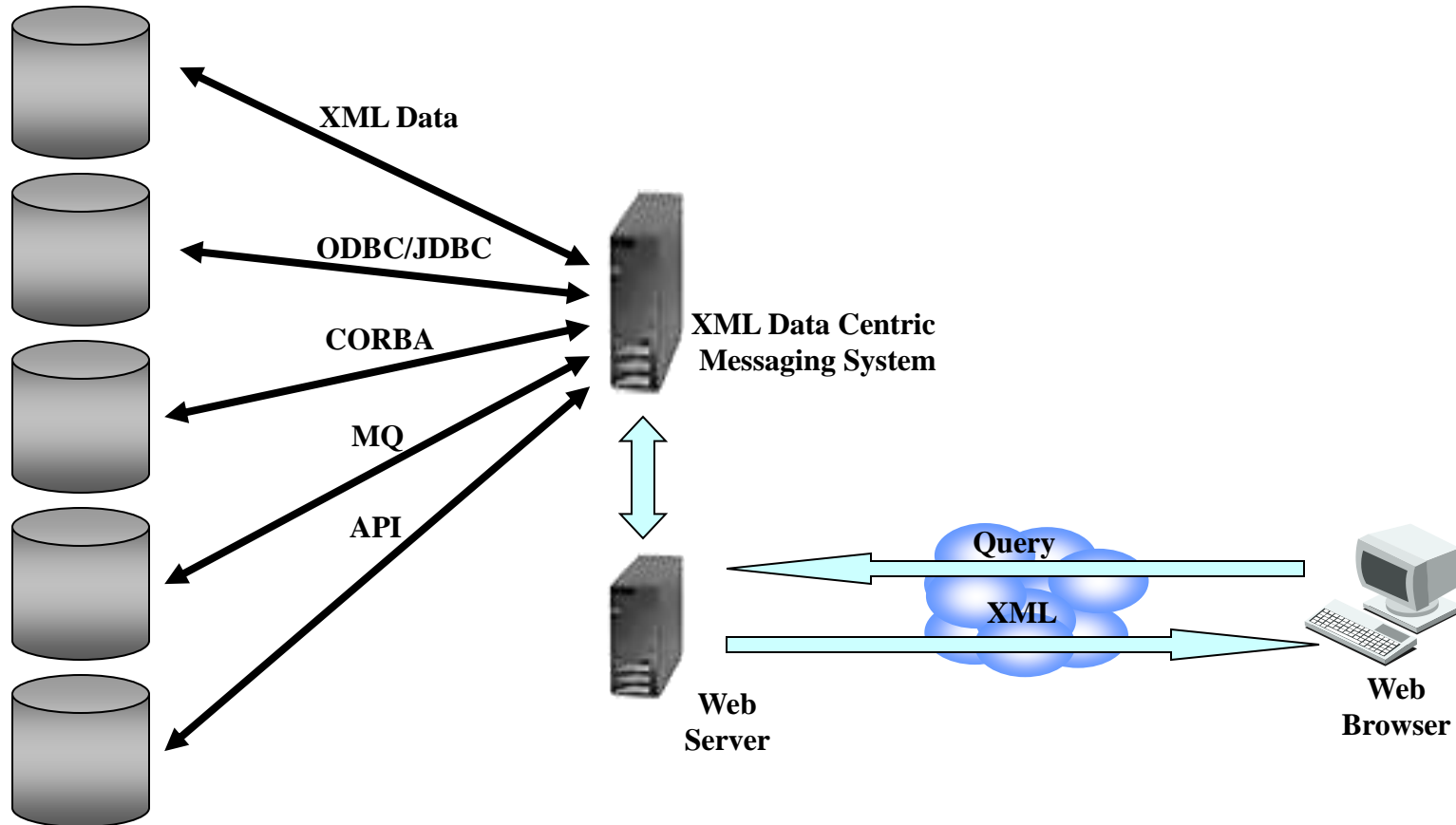
Create business plan via simulation



(Kookmin Credit Card)



# eBizFor Xchange

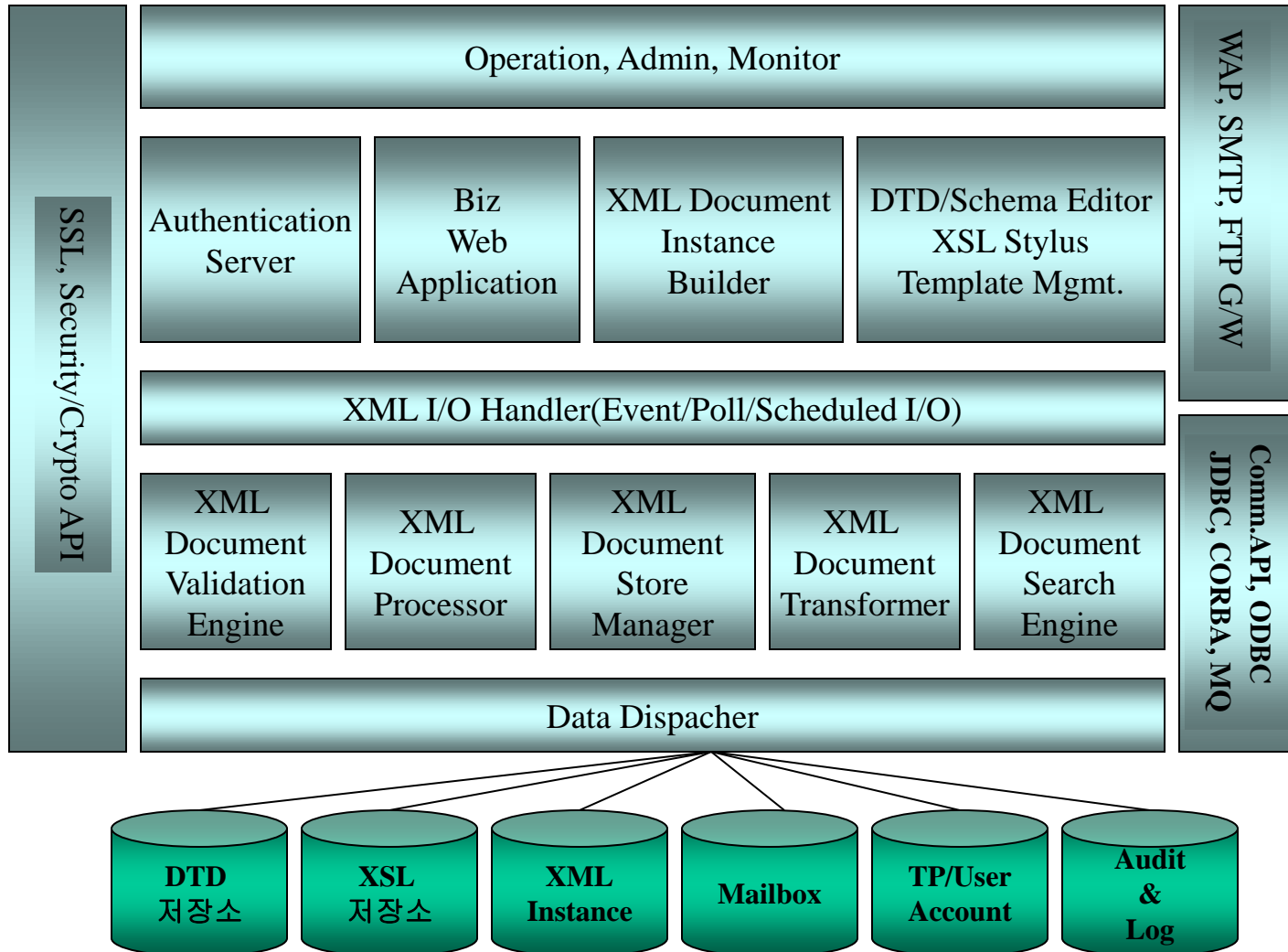


**Back End Resources**  
*Object & Relational Repositories*

**Middle Tier Server**  
*Business Logic,  
Data Integration, and  
Conversion to XML*

**Client**  
*Data Manipulation  
and Display*

# eBizFor Xchange





# Wireless Internet

Mobile Internet Solution (WAP:Wireless Application Protocol)

**WAP Application Server**

**Server S/W for WAP service**

**WAP Client**

**WAP browser**

**WAP Toolkit**

**WAP contents authoring tool**



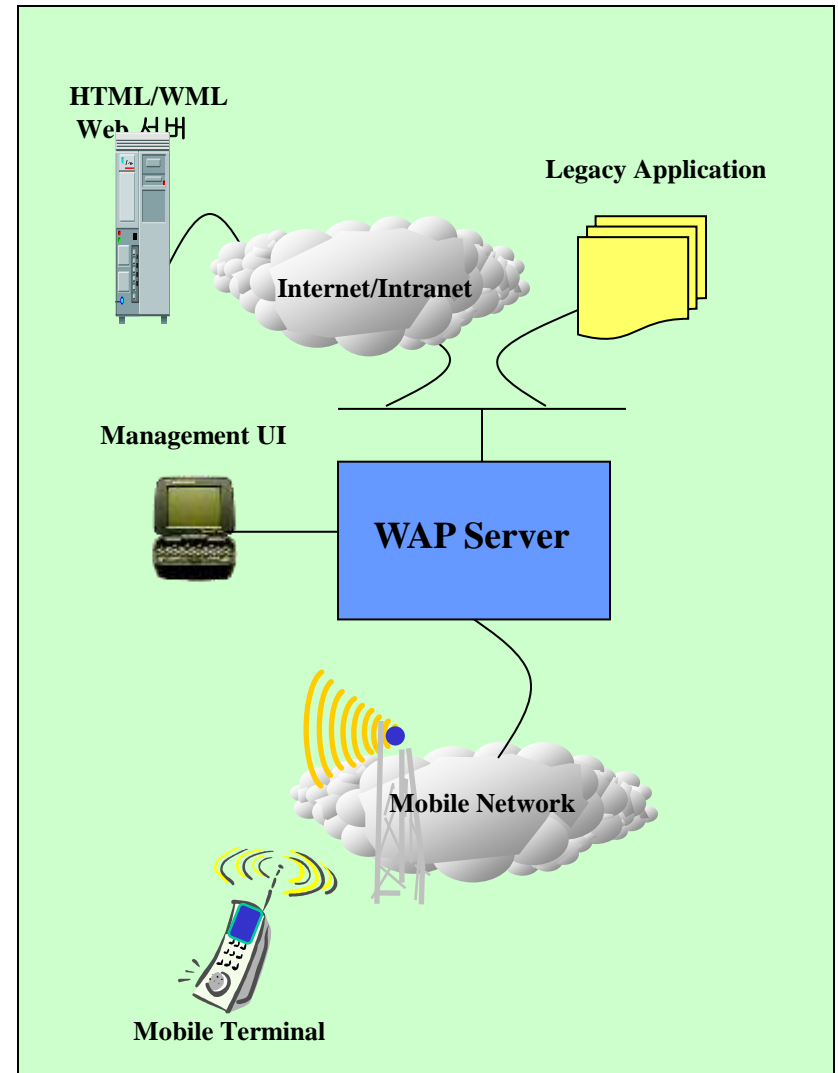
# Wireless Internet - WAP Server

## WaveGram WAP Server

- WAP 1.1 Compliant
- Wireless internet platform for corporate
- Intranet/Extranet service
- Third-party system integration
- Back-end system integration API
- WAP application development tools

## WAP Server Extensions

- User Authentication Server(SSO)
- Push Manager
- Document Converter
- Document Cache Engine
- WAP JAVA API



# Wireless Internet- WAP Client/Toolkit

## WaveGram WAP Client

- **WML Browser**
- **WMLScript Virtual Machine**
- **WMLScript Libraries**
- **URL Loader**
- **Wireless Protocol Stack**
- **WML browser emulator**

## WaveGram WAP Toolkit

- **WML and WMLScript Editor**
- **Device Simulator**
- **WMLScript Libraries**
- **WML Browser**
- **Script Interpreter and run-time libraries**

